



Goodleigh C of E Primary School
GOODLEIGH N Devon EX32 7LU
Telephone: 01271 342977
Email: admingoodleigh@goodilf.org.uk
Website: www.goodleigh-primary.devon.sch.uk



Twitter:  www.twitter.com/GoodleighSch
Headteacher: Claire Grant
Date: 9th September 2022

Dear Parents and Carers,

Welcome back, it is lovely to see all of the children back at school enjoying learning. We reflected on the life of Queen Elizabeth II and talked about King Charles III today.

Whole School, 'Discovering Devon'

The children had a great start to their 'Discovering Devon' topic and learnt about the wonderful county that we live in. They shared with each other what they know about our home county and enjoyed a Devon cream tea.



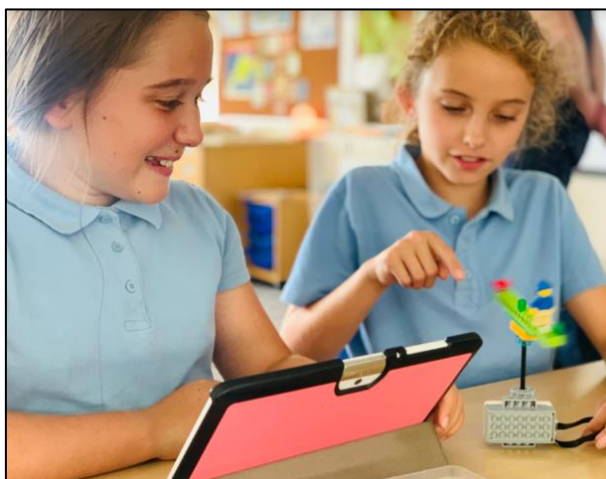
Whole School, Clive PiG, 'Devon Tales'

The children were thoroughly entertained by Clive PiG's tales. They learnt about the pirates and smugglers that once visited our land and heard some of the legends that surround our county's natural landmarks.



Years One to Six, Junior Stem Lego Robotics Workshop

The children enjoyed the Lego robotics programming workshops. They used engineering and programming skills and learnt how to write algorithms to control their Lego robots.



Monday 12th September, Reception and Year One, Futures Farm Visit, Woolacombe

Please ensure your child wears their Forest School clothing and brings a packed lunch with a water bottle, sunblock, a hat and a waterproof coat depending on the weather. Please drop your child off at the Village Hall by 8.45 am where Miss Stringer will be waiting. The children will return to school by 3.30 pm for usual pick up.

Tuesday 13th September, Year Two and Year Three, Wildwood Escot, Exeter

Please ensure your child wears their Forest School clothing and suitable footwear. They will be taking part in a swamp walk challenge where they will get muddy and wet. Your child will need to bring a spare change of clothes with a towel and shoes, a plastic bag, a packed lunch with a water bottle, sunblock, a hat and a waterproof coat depending on the weather. School packed lunches can be ordered on Monday; please return the order form to the office. Your child will need to be dropped off at the Village Hall at 7.50 am where Miss Claydon will be waiting. The children will return to school at 4.10 pm. If your child usually attends after school club they can be collected at 4.30 pm.

Postponements - Years Five and Six Bike Ride and Year Four Walk to Codden Hill

Due to next week's weather forecast both the Year Five and Six bike ride and Year Four walk to Codden Hill will be postponed until later this half term.

Morning drop-offs

You may drop your child between 8.00 am and 9.00 am at the blue playground gates. If you are driving up to the school to drop your child at the blue gate please park alongside the gate whilst your child leaves the car and leave promptly to avoid congestion.

The Village Hall allows us to use their car park before and after school and we recommend that you primarily park here.

Gymnastics, Tennis and Trampolining

Reception, Years One, Two and Three will have weekly gymnastics sessions with Falcons Gymnastics for the first half of the term on Wednesdays and weekly trampolining sessions with Air Extreme for the second half of the term. Trampolining will take place on Monday afternoons commencing on Monday 31st October.

Years Four, Five and Six will have tennis coaching at Park Lane Tennis Club for the first half of the term on Tuesdays and gymnastics with Falcons Gymnastics for the second half of the term. Gymnastics sessions will take place on Wednesdays commencing on Wednesday 2nd November.

Forest School

Reception will take part in Forest School on a Tuesday. Year One and Year Two will take part in Forest School on a Friday.

Please can you ensure that your child has clearly labelled clothing/sun block as appropriate and wellington boots in school.

PE

Please make sure that your child has their PE kit in school every day.

Blogs and Twitter Feed

In addition to the school newsletter we post news and articles on our class blogs and Twitter feed. You will find links to the blogs on the school website home page www.goodleigh-primary.devon.sch.uk and you can subscribe to our twitter feed: www.twitter.com/GoodleighSch

Privacy Notice

A copy of the privacy notice is available on our website and on the internal school noticeboard for review.

<https://www.goodleigh-primary.devon.sch.uk/wp-content/uploads/2019/05/Privacy-Notice-how-we-use-pupil-information.pdf>

Pupil Absence - First Day Contact Procedures

It is important that contact is made with the school at your earliest opportunity if your child is going to absent from school. If no contact is made we will telephone the primary contact first and in the event of no answer use any further emergency contact numbers provided to us in order to ascertain that your child is safe. It is advisable for parents or carers, in the event of a safeguarding concern, to ensure that one of your registered emergency contacts can gain access to your home to check that all is in order.

Please be advised that should our school process fail to locate a pupil we will risk assess the situation and decide further action which may include;

- Alert the Education Welfare Office to undertake enquiries on behalf of the school
- Continue to try and contact parent(s)/carer(s) and/or emergency contacts if the pupil is not considered to be at any increased risk
- Telephone the Police on 101 if not at risk of immediate significant harm but where there are escalated welfare concerns
- Telephone the Police using 999 if the child is considered to be at risk of immediate and significant harm or danger

After School Clubs

Please see the permission slip below for a list of the clubs and complete and return it to the school office if you would like your child to attend an after school club(s).

Citizens Advice

A copy of the Citizens Advice latest advice column has been sent home.

Food Bank Vouchers

We are authorised to issue food bank vouchers. If you would like to access this facility please give me a call, any contact is confidential.

We understand that there is a lot of pressure on families at the moment and if you are worried about anything please let us know and we will do our very best to help.

Northern Devon Foodbank - Barnstaple

St John's Community Centre, Rose Lane, Barnstaple EX32 8PG

Telephone: 01271 329902, 07422 651251

<https://northerndevon.foodbank.org.uk/>

Opening times:

Mondays - 10.30 am until 1.30 pm

Tuesdays - closed

Wednesdays - 10.30 am until 1.30 pm

Thursdays - closed

Fridays - 10.30 am until 1.30 pm

Saturday - closed

Sunday - closed

Kind regards,

Claire Grant

Executive Headteacher

Diary Dates

Monday 12 th September	Reception and Year One, Futures Farm Visit, Woolacombe
Tuesday 13 th September	Years Two and Three, Wildwood Escot Visit, Exeter
Tuesday 20 th September	Years Five and Six, Lundy Island Visit, meet at Ilfracombe Harbour at 9.00 am and collect from Ilfracombe at 6.00 pm
Thursday 22 nd September	Year Four, Lundy Island Visit, meet at Ilfracombe Harbour at 9.00 am and collect from Ilfracombe at 6.00 pm
Monday 26 th September	Whole School, Rosh Hashanah, Jewish New Year Festival
Thursday 20 th October	Whole School, Theatre Alibi Performance 'The Parcel'
Friday 21 st October	Non Pupil Day
Monday 24 th - Friday 28 th October	Half Term
Monday 31 st October	Back to School
Tuesday 1 st November	Years Three and Four, Bikeability on the playground
Wednesday 2 nd November	Years Five and Six, Bikeability at Pilton Community College
Thursday 3 rd November	Years Five and Six, Bikeability at Pilton Community College
Tuesday 8 th November	Years Three and Four, Bikeability on the playground
Wednesday 9 th November	Years Five and Six, Bikeability at Pilton Community College
Thursday 10 th November	Years Five and Six, Bikeability at Pilton Community College
Monday 21 st November	Whole School, Nasal Flu Vaccination

Exmoor Dark Skies Festival
Thursday 13th to Sunday 30th October

<https://www.exmoor-nationalpark.gov.uk/enjoying/stargazing/dark-skies-festival>

After School Clubs Permission Slip

Please complete and return to the office

Name of child / children	When	Activity	For
	Monday 3.30-4.30	Construction and Colouring	Years R-6
	Monday 3.30-4.30	Multi-Sports	Years 3-6
	Tuesday 3.30-4.30	Gardening	Years R-6
	Wednesday 3.30-4.30	Willowbank Play	Years R-6
	Thursday 3.30-4.30	Secret Garden Play	Years R-6
	Thursday 3.30-4.30	Netball	Years 2-6

Parent/Carer signature